



INSTALLATION INSTRUCTIONS

GERFLOR TECHNIC EL5 TILES

These instructions are specifically written for the installation of the following products:

Product	Size	Installation direction	Seams Welded
Mipolam Technic EL 5 in tiles	Approx. 24" x 24"	90°	CR 40
Welding Rod	4mm		CR 40

Important Note: Before installing, refer to Gerflor Installation Handbook for acclimation, job site conditions, subfloor prep, and other general installation recommendations.

1. GENERAL INFORMATION

- 1.1. Gerflor ESD flooring products are formulated to withstand high moisture conditions. To perform as designed, the concrete should be properly prepared to create a contaminant free and porous substrate.
- 1.2. Gerflor ESD flooring products are not designed to withstand hydrostatic or osmotic pressure.
- 1.3. *The guidelines offered within this document are not intended to be all inclusive. Only qualified, professional flooring technicians experienced in the field of resilient flooring should proceed with this installation system.*
- 1.4. It is recommended to mechanically prepare the concrete via grinding or bead blasting the surface to achieve a CSP 1+, clean and porous substrate.
- 1.5. Moisture and pH testing must be performed in accordance with ASTM F710-17.
- 1.6. Adhesive bond tests are recommended to ensure adequate bonding to the substrate.
- 1.7. Do not install material that has visible defects or damage. A contractor that installs material that has visible defects or damage assumes responsibility for the damaged material.

2. INSTALLATION OF TECHNIC EL5 ESD TILES

Note: Seams of conductive and static dissipative tiles must always be heat-welded.

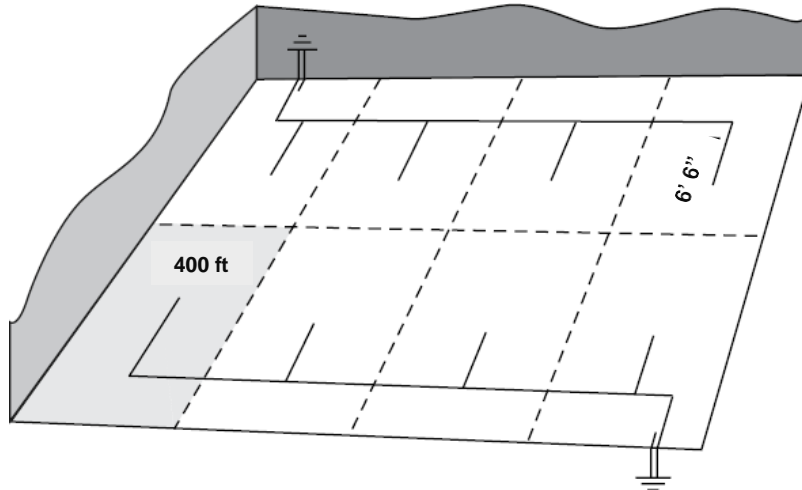
3. COPPER STRIP LAYOUT FOR TECHNIC EL5 TILES USING ESD ADHESIVE

NOTE: THE INSTALLATION OF THE COPPER STRIP IS RELATED TO THE TYPE OF ADHESIVE USED FOR THE PROJECT. SEE RECOMMENDED ADHESIVE INSTRUCTIONS BELOW FOR MORE DETAILS.

- 3.1. Copper strip comes in rolls of 656 linear feet.
- 3.2. The copper strip is 3/8" wide and 0.003" thick.
- 3.3. Layout copper strip and coordinate grounding with a certified electrician.
- 3.4. **For rooms less than 400 sq. ft. use one copper strip 6'6" long. Allow extra copper at the wall for proper grounding.**

NOTE: THE TILES MUST BE GROUNDED EVERY 400 SQ. FT. AND HAVE A MINIMUM 6'6" LONG

COPPER STRIP BENEATH.

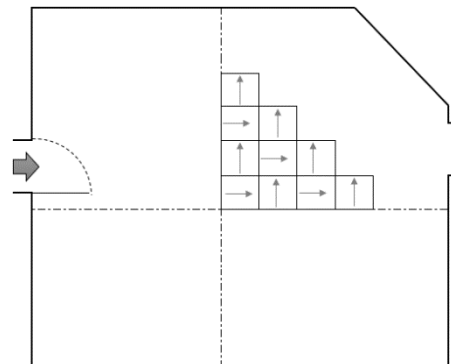


- 3.5. Layout copper strip and coordinate grounding with a certified electrician.
- 3.6. For rooms ≤ 400 sq. ft., a piece of copper strip 6'6" long under the tiles and coming out along the wall to be grounded by a certified electrician.
- 3.7. For rooms > 400 sq. ft., install a copper strip on the perimeter and a piece of 6'6" long for every 400 sq. ft.
- 3.8. The copper strips must be grounded by a certified electrician.
- 3.9. Install copper strip with the conductive adhesive.

NOTE: Install copper strip with the conductive adhesive before starting the installation of the flooring. Spread conductive adhesive in narrow strips to the substrate according to copper strip layout and lay copper into wet adhesive. Immediately flat trowel, applying pressure to carefully smooth the copper and remove any excessive adhesive. Allow adhesive to dry before laying out tiles. When installing the tiles, spread adhesive on the entire surface being careful not to damage the copper.


4. TILE LAYOUT

- 4.1. Chalk the centre lines of the work area in both directions so that one line is parallel to the length of the room and that the second line is on a 90° angle to the first line.
- 4.2. Position centre lines to allow the perimeter tiles to be \geq to $\frac{1}{2}$ tile.
- 4.3. Before spreading adhesives, it is recommended to lay one or two rows of tiles along both centre lines to check for proper alignment.
- 4.4. Mix tiles from different boxes to obtain a consistent layout.



- 4.5. Be certain this tile is installed on the lines to fit the 90° angle.
- 4.6. After the first tile is in place, begin laying tiles outward along both guidelines.
- 4.7. Press tiles firmly against adjoining tiles and press into the adhesive.
- 4.8. Begin stair-stepping the tiles into the field area.
- 4.9. It is recommended to install the tiles in a checkerboard pattern.

5. **INSTALLING ESD TILES USING ESD ADHESIVE**

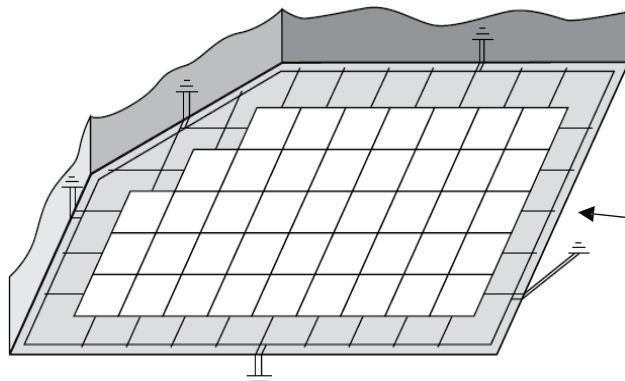
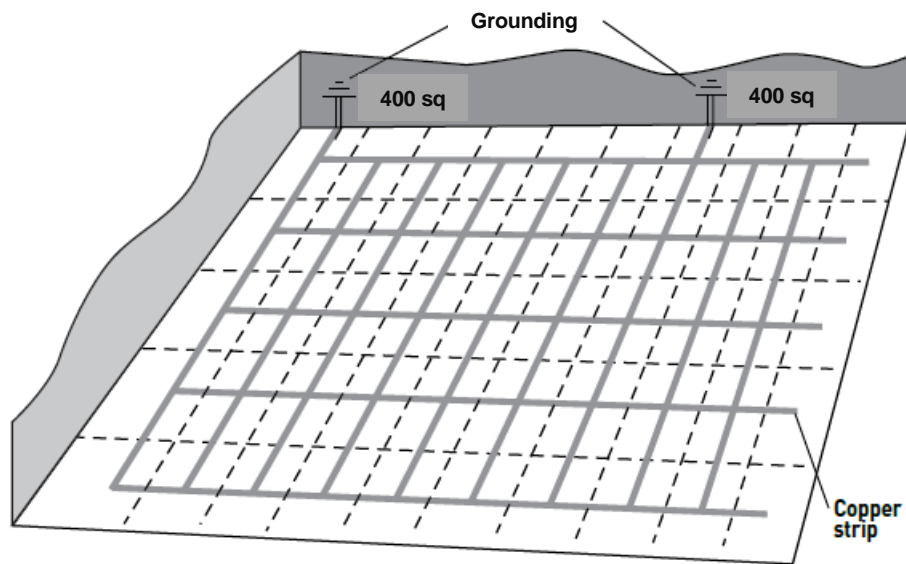
- 5.1. Always refer to the **ESD Adhesive Technical Data Sheet for proper application**
- 5.2. Recommended trowel size is 1/32" x 1/16" x 1/32", covering 170 to 220 sq. ft. per US gallon. 
- 5.3. To ensure uniform adhesion of the entire surface, apply a workable amount of adhesive at once.
- 5.4. Maintain a uniform spread rate. Replace trowel (or trowel blade) with every pail used.
- 5.5. Starting from the centre line and working outward, apply the adhesive and install tiles when the adhesive is ready.
- 5.6. Press tiles firmly against adjoining tiles and press into the adhesive.
- 5.7. Once flooring is placed into the adhesive, immediately roll thoroughly with a 3 section 100 lbs roller in both directions.
- 5.8. Always roll seams, at the walls, and under toe kicks with a hand roller to ensure 100% transfer of adhesive.
- 5.9. Do not stand, kneel, or walk on the sheet vinyl flooring. The use of kneeling board and walking board is mandatory to eliminate adhesive displacement.
- 5.10. There must be wet transfer of adhesive to the backing of the flooring. Use weights if needed for end seams or perimeters. If the adhesive skins over or dries, it must be scraped up and new adhesive applied.
- 5.11. Using a 100 lbs sectional steel roller, roll the flooring in the width first and then the length to ensure adhesive transfer and to evacuate all air that can lead to bubbles. Optimally there should be an individual tasked solely with this responsibility.
- 5.12. Continually check the flooring for bubbles. To verify there are no bubbles, look down and across the flooring from both standing and prone position with the lights on and off. The use of a light source at floor level can be helpful in finding any air pockets or bubbles.

6. COPPER STRIP LAYOUT FOR TECHNIC EL5 TILES USING GERFIX LVT SPRAY - GERFIX TPS+

NOTE: THE INSTALLATION OF THE COPPER STRIP IS RELATED TO THE TYPE OF ADHESIVE USED FOR THE PROJECT. SEE RECOMMENDED ADHESIVE INSTRUCTIONS BELOW FOR MORE DETAILS.

- 6.1. Copper strip comes in rolls of 656 linear feet.
- 6.2. The copper strip is 3/8" wide and 0.003" thick.
- 6.3. Layout copper strip and coordinate grounding with a certified electrician.

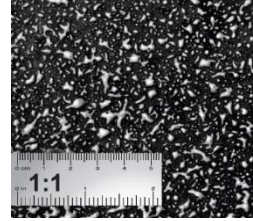
NOTE: THE TILES MUST BE GROUNDED EVERY 400 SQ. FT. AND HAVE A COPPER STRIP LAYING BENEATH THE CENTRE OF EACH TILE IN BOTH DIRECTIONS. CONNECT STRIPS BY LAYING A PIECE OF COPPER AROUND THE PERIMETER AND PROVIDE FOR EXTRA AT WALLS FOR PROPER GROUNDING EVERY 400 SQ. FT.



Tiles must be installed "centred" over copper strips laid beneath in both directions connected near the perimeters and grounded every 400 sq ft

7. INSTALLING ESD TILES USING GERFIX LVT SPRAY ADHESIVE

- 7.1. Always refer to the **Gerfix Spray Adhesive Technical Data Sheet**
- 7.2. Recommended spray pattern: (150 to 185 sq. ft. per can)
- 7.3. Ensure substrate, flooring, and surrounding areas are clean and dust free.



- 7.4. Wipe hand across the surface to verify for dust.



- 7.5. If dust transfers, substrate is not clean.

- 7.6. Damp-mop substrate if dust is present.

- 7.7. Protect from overspraying with a spray shield, drop cloths, paper, or masking tape.

- 7.8. Shake aerosol can well. Remove white cap.

- 7.9. To ensure uniform adhesion of the entire surface, spray a workable amount of adhesive at once.



- 7.10. Stand straight up to spray. Hold can upside down, approximately 20-30 inches horizontally from the substrate, aim at floor and press tip with a finger.

- 7.11. Walk right to left smoothly to achieve results as seen on photo.

- 7.12. Adhesive should spray out in a wide mist and fall like snow.

- 7.13. Spraying in a sweeping motion may result in an inconsistent spray pattern.

- 7.14. Excess buildup or inconsistent spray pattern on the substrate may cause telegraphing.

- 7.15. Avoid extremely heavy application.

- 7.16. To ensure optimal spray pattern, remove any adhesive build up that may occur during the application process.



- 7.17. If overspray occurs, it may be removed with a damp cloth while the adhesive is still wet.

- 7.18. **Install copper strip into the tacky adhesive just before installing the flooring into the adhesive. Make sure there is no adhesive on top of the copper strip.**

- 7.19. Once the adhesive is dry to the touch, immediately install the flooring. While open, ensure that adhesive is not contaminated by dust.



- 7.20. Starting from the centre line and working outward, apply the adhesive and install tiles when the adhesive is ready.


- 7.21. Press tiles lightly against adjoining tiles and press into the adhesive.

- 7.22. Roll flooring with a 3 section 100 lbs roller within 1 hour after installation to complete the bonding process.

- 7.23. Always roll seams, at the walls, and under toe kicks with a hand roller to ensure 100% transfer of adhesive.

- 7.24. **The floor is open to all traffic immediately after installation.**

8. INSTALLING ESD TILES USING GERFIX TPS+ ACRYLIC ADHESIVE

- 8.1. Always refer to the **Gerfix TPS+ Adhesive Technical data Sheet**
- 8.2. Recommended trowel size is 1/32" x 1/16" x 1/32," covering from 170 to 220 sq. ft. per US gallon. 
- 8.3. To ensure uniform adhesion of the entire surface, apply a workable amount of adhesive at once.
- 8.4. Maintain a uniform spread rate. Replace trowel (or trowel blade) with every pail used.
- 8.5. Immediately after trowelling the adhesive onto the concrete use a medium-napped paint roller saturated with adhesive to flatten out visible trowel marks and even out the adhesive. **A double arm roller frame is recommended to ensure an even coat of adhesive.**
- 8.6. "Open time" of the adhesive is dependent upon porosity of the substrate, temperature, and humidity. It is important that the installers familiarize themselves with the adhesive before starting the installations.

Application Characteristics over Porous Substrates (Non-Porous-see note below)		
	Open Time*	Working Time**
Gerflor ESD Floorings	20 to 40 minutes (to reach a tacky state***)	Up to 1.5 hours

- * **Open Time:** is the wait time required before installing flooring into the adhesive.
- ** **Working time:** is the wait time required before installing flooring into the adhesive. Exceeding the working time will result in poor adhesion and could lead to peaking of tiles, or gaps.
- *** **Tacky:** When adhesive starts to become translucent and there is light transfer to the fingers when slightly touched resulting in transfer to the backing of the flooring.

Note: For Non-Porous substrates such as existing flooring or metal, let the adhesive dry completely, with NO transfer to the fingers when touched, then immediately install the flooring and roll with a 100 lb. roller.

- 8.7. **Install copper strip into the tacky adhesive *just before installing the flooring* into the adhesive. Make sure there is no adhesive on top of the copper strip.**
- 8.8. Starting from the centre line and working outward, apply the adhesive and install tiles when the adhesive is ready.
- 8.9. Press tiles firmly against adjoining tiles and press into the adhesive.
- 8.10. Periodically, lift the edge of a tile to confirm transfer of adhesive to the back of the flooring. There must be adhesive transfer for the tiles to be adequately secured to the substrate.
- 8.11. Once flooring is placed into the adhesive, immediately roll thoroughly with a 3 section 100 lbs roller in both directions.
- 8.12. Always roll seams, at the walls, and under toe kicks with a hand roller to ensure 100% transfer of adhesive.
- 8.13. During the installation, with the lights on and off, always double-check the flooring for bubbles with portable, ambient, and/or fixed lighting.



INSTALLATION INSTRUCTIONS

GERFLOR TECHNIC EL5 TILES

- 8.14. Avoid adhesive displacement by prohibiting traffic for a period of 24 hours and 72 hours for rolling loads.

1. HEAT WELDING - REFER TO THE "HEAT WELDING GERFLOR VINYL PRODUCTS" DOCUMENT

2. ONCE THE INSTALLATION IS COMPLETED

- 2.1. Perform a visual inspection of the project.
- 2.2. Verify every welded seam.
- 2.3. Repair every imperfection before leaving the project.
- 2.4. Make sure that every vertical obstacle such as doorframes is well trimmed and sealed with an acrylic, silicone, or equivalent sealant product.
- 2.5. To maximize the aesthetic appearance and serviceability of the newly installed flooring, provide your customer with a copy of the **Gerflor Maintenance Guide**.